

Supplementary Table SI. DIC-related mortality stratified by place of death in the United States from 1999 to 2020

Place of Death	Deaths	% of Total Deaths
Medical Facility - Inpatient	36,123	90.60%
Nursing home/long-term care	961	2.40%
Decedent's home	929	2.30%
Medical Facility - Outpatient or ER	920	2.30%
Hospice facility	465	1.20%
Other	255	0.60%
Place of death unknown	118	0.30%
Medical Facility - Status unknown	59	0.10%
Medical Facility - Dead on Arrival	23	0.10%
Total	39,853	100.00%

Supplementary Table SII. DIC-related mortality stratified by Sex in the United States from 1999 to 2020

Year	Age-Adjusted Rate (95% CI)		
	Overall	Female	Male
1999	6.4(6.1-6.7)	5.7(5.4-6.1)	7.5(7.1-8)
2000	6.2(5.9-6.4)	5.5(5.2-5.9)	7.2(6.7-7.6)
2001	5.5(5.3-5.8)	5(4.7-5.3)	6.4(6-6.8)
2002	5.6(5.4-5.9)	5.1(4.8-5.4)	6.5(6-6.9)
2003	5.2(4.9-5.4)	4.9(4.6-5.2)	5.7(5.3-6.1)
2004	5(4.8-5.2)	4.7(4.4-5)	5.7(5.3-6.1)
2005	4.9(4.7-5.1)	4.5(4.2-4.8)	5.5(5.2-5.9)
2006	4.6(4.3-4.8)	4.3(4.1-4.6)	4.9(4.6-5.3)
2007	4.5(4.3-4.7)	4.3(4-4.6)	4.9(4.6-5.3)
2008	4.2(4-4.4)	4(3.7-4.3)	4.5(4.2-4.9)
2009	4.1(3.9-4.3)	3.9(3.6-4.1)	4.4(4-4.7)
2010	4.2(4-4.4)	3.9(3.6-4.1)	4.7(4.4-5)
2011	4.1(3.9-4.3)	4(3.8-4.3)	4.4(4.1-4.8)
2012	4(3.8-4.2)	3.8(3.5-4)	4.4(4.1-4.7)
2013	3.6(3.5-3.8)	3.3(3.1-3.6)	4(3.7-4.3)
2014	3.7(3.5-3.9)	3.5(3.3-3.7)	4.1(3.8-4.3)
2015	3.4(3.3-3.6)	3.3(3.1-3.6)	3.6(3.3-3.9)
2016	3.6(3.5-3.8)	3.4(3.1-3.6)	4.1(3.8-4.4)
2017	3.6(3.4-3.7)	3.5(3.3-3.7)	3.7(3.5-4)
2018	3.6(3.4-3.8)	3.5(3.3-3.7)	3.7(3.5-4)
2019	3.5(3.4-3.7)	3.3(3.1-3.5)	3.7(3.4-3.9)
2020	4(3.8-4.1)	3.6(3.4-3.9)	4.4(4.1-4.7)

Supplementary Table SIII. DIC-related mortality stratified by Race in the United States from 1999 to 2020

Age-Adjusted Rate (95% CI)				
Year	Hispanic or Latino	Asian or Pacific Islander	Black or African American	White
1999	7.7(6.3-9.1)	10.5(8.2-13.2)	10.8(9.6-12.1)	5.9(5.6-6.2)
2000	7.1(5.8-8.5)	10.2(8-12.8)	12.1(10.8-13.4)	5.5(5.2-5.8)
2001	6.8(5.6-8.1)	6.4(4.8-8.4)	10.2(9-11.4)	5.1(4.9-5.4)
2002	7.3(6-8.5)	5.1(3.8-6.8)	10.8(9.6-12)	5.2(4.9-5.4)
2003	6.4(5.3-7.6)	6.2(4.7-8.1)	10.5(9.3-11.7)	4.6(4.4-4.9)
2004	5.3(4.3-6.4)	6.4(4.8-8.2)	9.1(8-10.2)	4.6(4.3-4.8)
2005	4.8(3.8-5.8)	6.1(4.7-7.8)	8.4(7.3-9.4)	4.5(4.3-4.8)
2006	5.4(4.4-6.4)	6.4(5-8)	7.7(6.7-8.7)	4.2(4-4.4)
2007	5.8(4.8-6.8)	6.5(5.1-8.1)	8.7(7.6-9.7)	4(3.8-4.2)
2008	4.9(4-5.8)	5.5(4.3-6.9)	6.2(5.4-7.1)	3.9(3.7-4.1)
2009	4.2(3.4-5)	6.4(5.1-7.9)	7.1(6.2-8)	3.7(3.5-3.9)
2010	5.1(4.2-6)	5.8(4.6-7.2)	6.6(5.7-7.5)	3.9(3.7-4.1)
2011	4.6(3.8-5.4)	4.6(3.6-5.8)	6.7(5.9-7.6)	3.9(3.7-4.1)
2012	4.7(3.9-5.5)	4.9(3.9-6.2)	6.8(6-7.6)	3.6(3.4-3.8)
2013	3.8(3.1-4.4)	4.5(3.6-5.6)	7(6.2-7.9)	3.2(3.1-3.4)
2014	4.3(3.6-5.1)	4.7(3.8-5.9)	5.6(4.9-6.3)	3.5(3.3-3.7)
2015	4(3.4-4.7)	4(3.2-5)	5.4(4.7-6.1)	3.2(3-3.3)
2016	4.3(3.6-4.9)	4.4(3.6-5.4)	6.2(5.4-6.9)	3.3(3.1-3.5)
2017	3.8(3.2-4.4)	3.7(3-4.6)	6.1(5.4-6.8)	3.3(3.1-3.5)
2018	4.5(3.9-5.2)	3.8(3.1-4.7)	6.7(5.9-7.4)	3.3(3.1-3.5)
2019	3.7(3.1-4.3)	3.8(3.1-4.7)	6(5.3-6.6)	3.2(3-3.4)
2020	4.9(4.2-5.5)	4.3(3.5-5.1)	6.8(6.1-7.5)	3.6(3.4-3.8)

Supplementary Table SIV. DIC-related mortality stratified by Age in the United States from 1999 to 2020

Year	Age-Adjusted Rate (95% CI)		
	65-74 years	75-84 years	85+ years
1999	4.8(4.5-5.1)	7.6(7.1-8.1)	9.8(8.9-10.8)
2000	4.4(4.1-4.7)	7.4(7-7.9)	10(9-10.9)
2001	4.2(3.9-4.5)	6.6(6.2-7.1)	8.2(7.3-9)
2002	4.2(3.9-4.5)	6.9(6.4-7.3)	8.2(7.4-9.1)
2003	3.8(3.5-4.1)	6.2(5.8-6.6)	8(7.2-8.9)
2004	3.6(3.3-3.9)	6.1(5.7-6.6)	7.8(7-8.6)
2005	3.5(3.2-3.8)	6(5.6-6.4)	7.6(6.8-8.4)
2006	3.4(3.1-3.6)	5.6(5.2-6)	6.5(5.8-7.2)
2007	3.3(3-3.5)	5.4(5-5.8)	6.9(6.2-7.7)
2008	3.2(2.9-3.4)	4.9(4.6-5.3)	6.2(5.5-6.9)
2009	3.1(2.8-3.3)	4.8(4.5-5.2)	6.1(5.4-6.8)
2010	3(2.8-3.3)	5.2(4.8-5.6)	6.3(5.7-7)
2011	2.9(2.7-3.2)	5.3(4.9-5.7)	6.1(5.4-6.7)
2012	3.1(2.8-3.3)	4.7(4.3-5)	6.1(5.5-6.7)
2013	2.7(2.5-2.9)	4.6(4.2-5)	4.9(4.3-5.4)
2014	2.9(2.7-3.2)	4.4(4.1-4.8)	5.1(4.5-5.7)
2015	2.8(2.6-3)	4(3.7-4.3)	4.5(4-5)
2016	2.8(2.6-3)	4.6(4.2-5)	4.5(4-5)
2017	2.9(2.7-3.1)	4.2(3.9-4.6)	4.5(4-5.1)
2018	3(2.8-3.2)	4.3(4-4.6)	4.2(3.7-4.7)
2019	3(2.8-3.1)	4.2(3.8-4.5)	3.8(3.4-4.3)
2020	3.4(3.2-3.6)	4.6(4.3-4.9)	4.5(4-5)

Supplementary Table SV. DIC-related mortality stratified by Census region in the United States from 1999 to 2020

Age-Adjusted Rate (95% CI)				
Year	Northeast	Midwest	South	West
1999	7.2(6.6-7.8)	6.3(5.8-6.8)	6.6(6.1-7)	5.4(4.9-6)
2000	7(6.4-7.7)	5.9(5.4-6.4)	6.4(6-6.9)	5(4.5-5.5)
2001	6.1(5.5-6.7)	5.5(5-6)	5.9(5.5-6.3)	4.4(3.9-4.9)
2002	6.3(5.7-6.9)	5.5(5-6)	5.6(5.2-6)	5.2(4.7-5.8)
2003	5.3(4.8-5.8)	5.1(4.6-5.6)	5.4(5-5.8)	4.6(4.2-5.1)
2004	5.5(5-6)	4.8(4.3-5.3)	5.1(4.7-5.5)	4.7(4.2-5.2)
2005	5(4.5-5.5)	4.3(3.8-4.7)	5.6(5.2-6)	4.4(3.9-4.9)
2006	5(4.5-5.5)	4.1(3.7-4.5)	4.7(4.4-5.1)	4.3(3.8-4.7)
2007	4.6(4.2-5.1)	4.1(3.7-4.5)	4.9(4.5-5.2)	4.1(3.7-4.6)
2008	4.1(3.6-4.5)	3.7(3.3-4.2)	4.5(4.2-4.9)	4.2(3.7-4.6)
2009	3.9(3.5-4.3)	3.7(3.3-4.1)	4.3(3.9-4.6)	4.3(3.9-4.8)
2010	3.9(3.5-4.4)	3.7(3.3-4.1)	4.7(4.3-5.1)	4.1(3.7-4.6)
2011	4(3.5-4.4)	3.9(3.5-4.3)	4.5(4.2-4.9)	4.1(3.6-4.5)
2012	4.1(3.7-4.5)	3.7(3.3-4.1)	4.2(3.9-4.5)	3.9(3.5-4.3)
2013	3.4(3-3.8)	3.2(2.9-3.6)	3.9(3.6-4.2)	3.7(3.3-4.1)
2014	3.7(3.2-4.1)	3.3(2.9-3.7)	4(3.7-4.3)	3.8(3.5-4.2)
2015	3.5(3.1-3.9)	3(2.6-3.3)	3.6(3.3-3.9)	3.6(3.2-3.9)
2016	3.7(3.3-4.1)	3.3(3-3.7)	3.8(3.5-4.1)	3.7(3.3-4.1)
2017	3.3(3-3.7)	3.4(3-3.7)	3.5(3.3-3.8)	4(3.6-4.4)
2018	3.6(3.2-4)	3.2(2.8-3.5)	3.7(3.4-4)	3.9(3.5-4.3)
2019	3.5(3.1-3.8)	2.9(2.6-3.3)	3.5(3.3-3.8)	3.9(3.6-4.3)
2020	4.3(3.9-4.7)	3.5(3.1-3.8)	3.9(3.7-4.2)	4.3(3.9-4.6)

Supplementary Table SVI. DIC-related mortality stratified by Urban-rural classification in the United States from 1999 to 2020

Age-Adjusted Rate (95% CI)		
Year	Metropolitan	Non-Metropolitan
1999	6.4(6.1-6.7)	6.3(5.7-6.9)
2000	6.1(5.8-6.4)	6.4(5.8-7)
2001	5.5(5.2-5.7)	5.9(5.3-6.5)
2002	5.7(5.4-5.9)	5.5(4.9-6)
2003	5.2(4.9-5.4)	5(4.5-5.6)
2004	5.1(4.9-5.4)	4.6(4.1-5.1)
2005	4.8(4.6-5.1)	5.4(4.8-5.9)
2006	4.6(4.4-4.9)	4.3(3.8-4.8)
2007	4.5(4.2-4.7)	4.5(4-5)
2008	4.1(3.8-4.3)	4.6(4.1-5.1)
2009	4.1(3.9-4.4)	3.8(3.3-4.2)
2010	4.2(4-4.4)	4.1(3.7-4.6)
2011	4.2(3.9-4.4)	4.3(3.8-4.7)
2012	4(3.8-4.2)	3.9(3.4-4.3)
2013	3.6(3.4-3.8)	3.6(3.2-4.1)
2014	3.7(3.5-3.8)	4(3.5-4.4)
2015	3.4(3.2-3.6)	3.6(3.2-4)
2016	3.6(3.4-3.8)	3.8(3.3-4.2)
2017	3.5(3.4-3.7)	3.8(3.4-4.2)
2018	3.6(3.4-3.7)	3.9(3.5-4.3)
2019	3.5(3.3-3.6)	3.6(3.2-4)
2020	3.9(3.7-4.1)	4.5(4.1-5)

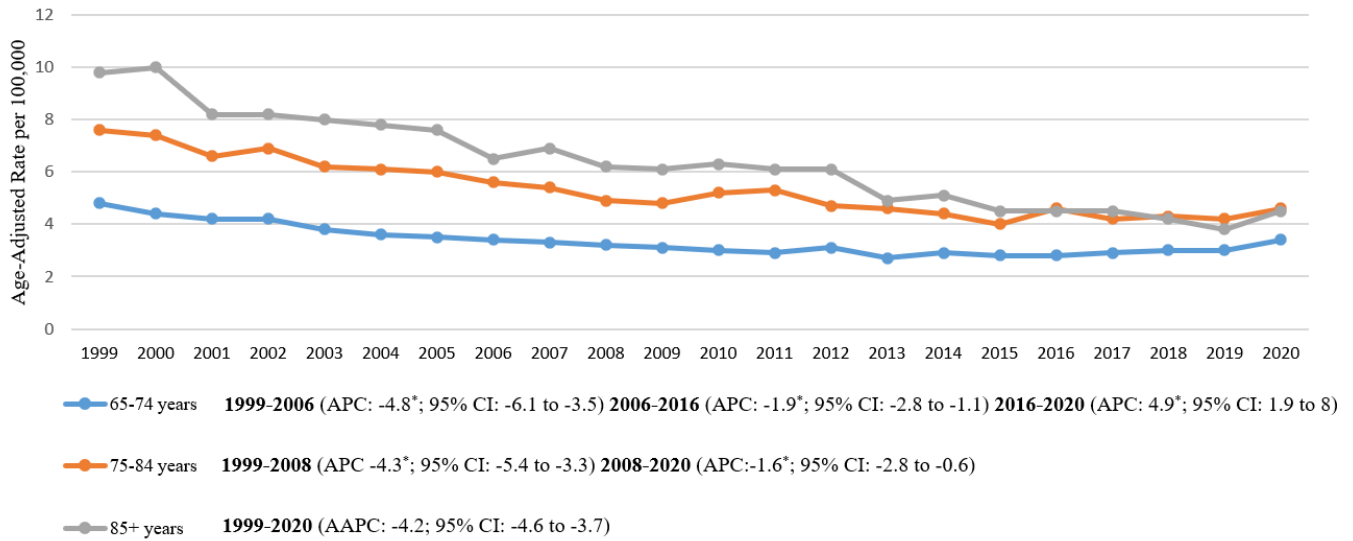
Supplementary Table SVII. DIC-related mortality stratified by State in the United States from 1999 to 2020

State	Age-Adjusted Rate (95% CI)
District of Columbia	8.6(7.1-10)
Rhode Island	7.2(6.3-8.1)
West Virginia	6.8(6.2-7.5)
Maryland	6.1(5.7-6.5)
Hawaii	5.7(5-6.4)
South Carolina	5.7(5.3-6.1)
Delaware	5.6(4.8-6.5)
Texas	5.4(5.2-5.6)
New Jersey	5.2(4.9-5.5)

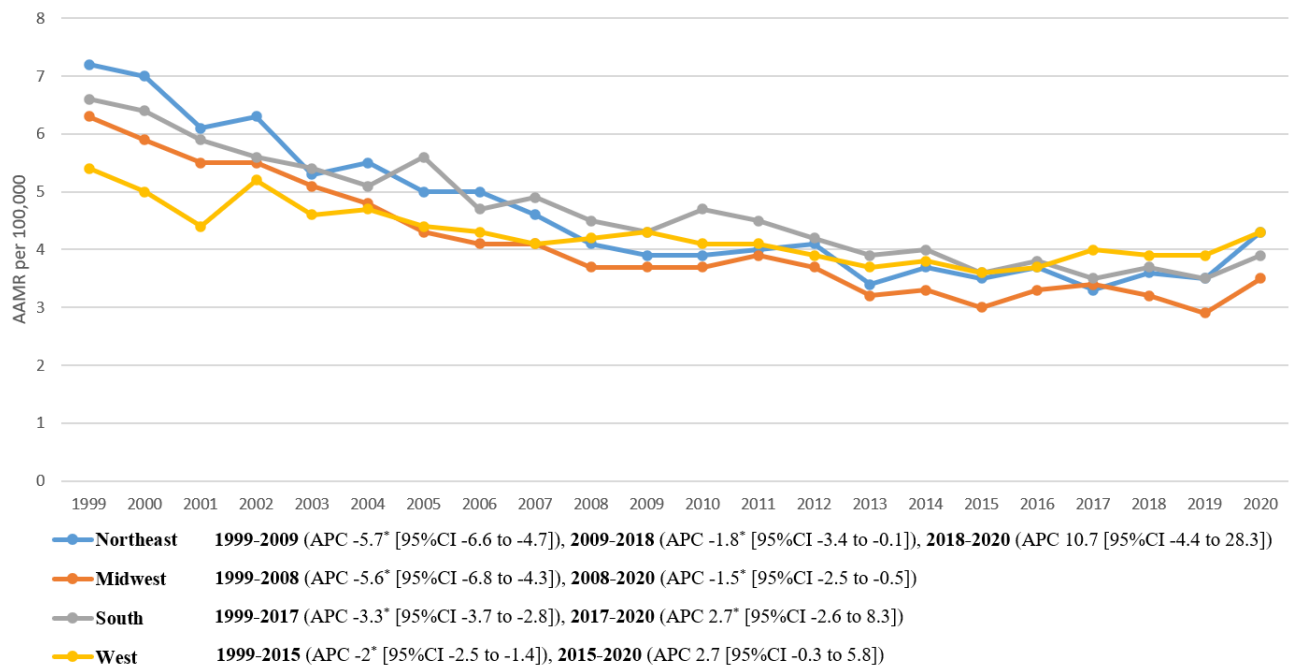
Alabama	5.1(4.8-5.5)
Connecticut	5.1(4.7-5.5)
Mississippi	4.9(4.5-5.4)
Tennessee	4.9(4.6-5.2)
California	4.8(4.6-4.9)
Pennsylvania	4.7(4.5-4.9)
Missouri	4.7(4.4-5)
Wyoming	4.6(3.6-5.8)
Kentucky	4.6(4.2-5)
Illinois	4.6(4.4-4.8)
Maine	4.6(3.9-5.2)
Arkansas	4.5(4.1-5)
Ohio	4.5(4.3-4.7)
North Carolina	4.4(4.2-4.7)
Oklahoma	4.4(4.1-4.8)
North Dakota	4.3(3.5-5.3)
Kansas	4.3(3.8-4.7)
Nevada	4.2(3.7-4.7)
Vermont	4.2(3.3-5.2)
Massachusetts	4.1(3.8-4.4)
Nebraska	4(3.5-4.6)
Georgia	4(3.8-4.3)
New York	4(3.8-4.2)
Washington	3.9(3.6-4.2)
New Mexico	3.9(3.4-4.4)
Alaska	3.8(2.8-5.1)
South Dakota	3.8(3-4.5)
Louisiana	3.8(3.4-4.1)
Virginia	3.7(3.5-4)
Michigan	3.7(3.5-4)
Idaho	3.7(3.2-4.3)
Indiana	3.7(3.4-3.9)
Arizona	3.6(3.3-3.9)
Minnesota	3.4(3.1-3.7)
Florida	3.2(3.1-3.4)
Wisconsin	3.2(2.9-3.5)
Utah	3.2(2.7-3.7)
New Hampshire	3.2(2.6-3.7)
Colorado	3.2(2.8-3.5)
Iowa	3.1(2.8-3.5)
Oregon	2.8(2.5-3.1)
Montana	2.8(2.2-3.4)

Supplementary Table SVIII. DIC-related mortality stratified by Underlying cause of death in the United States from 1999 to 2020

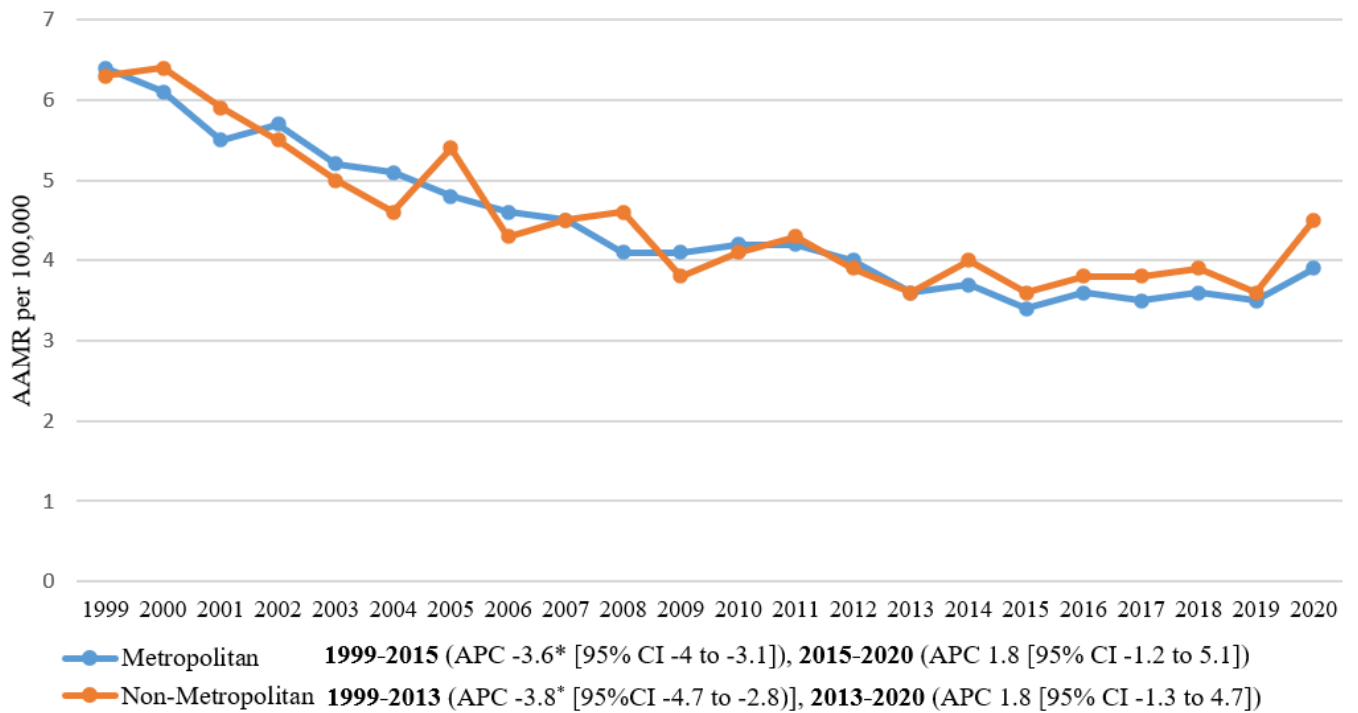
Age Adjusted Rate (95% CI)			
Year	Circulatory	Injury & Poisoning	Neoplasm
1999	3.5(3.3-3.7)	0.4(0.4-0.5)	1.8(1.6-1.9)
2000	3.5(3.3-3.7)	0.4(0.3-0.4)	1.6(1.5-1.7)
2001	3(2.8-3.2)	0.4(0.3-0.5)	1.3(1.2-1.5)
2002	3.1(3-3.3)	0.3(0.3-0.4)	1.4(1.3-1.5)
2003	2.8(2.6-3)	0.3(0.3-0.4)	1.4(1.3-1.5)
2004	2.8(2.6-2.9)	0.3(0.3-0.4)	1.3(1.2-1.5)
2005	2.6(2.5-2.8)	0.3(0.2-0.4)	1.3(1.2-1.4)
2006	2.5(2.4-2.7)	0.3(0.2-0.3)	1.1(1-1.2)
2007	2.5(2.3-2.6)	0.2(0.2-0.3)	1.2(1.1-1.3)
2008	2.2(2.1-2.4)	0.3(0.2-0.3)	1.1(1-1.3)
2009	2.2(2-2.3)	0.2(0.2-0.3)	1(0.9-1.1)
2010	2.3(2.1-2.4)	0.3(0.2-0.3)	1.2(1-1.3)
2011	2.2(2-2.3)	0.2(0.2-0.3)	1.2(1.1-1.3)
2012	2.2(2.1-2.3)	0.3(0.2-0.3)	1.1(1-1.2)
2013	1.9(1.8-2.1)	0.2(0.1-0.2)	1(0.9-1.1)
2014	2(1.9-2.2)	0.2(0.1-0.2)	1(0.9-1)
2015	1.8(1.7-1.9)	0.2(0.1-0.2)	0.9(0.8-1)
2016	2(1.8-2.1)	0.2(0.2-0.3)	1(0.9-1.1)
2017	2(1.8-2.1)	0.1(0.1-0.2)	1(0.9-1.1)
2018	2(1.9-2.1)	0.2(0.1-0.2)	1(0.9-1.1)
2019	1.9(1.8-2)	0.2(0.2-0.2)	1(0.9-1.1)
2020	2.2(2.1-2.3)	0.2(0.1-0.2)	1(0.9-1.1)



Supplemental Figure S1. DIC-related AAMRs per 100,000 adults in the United States from 1999 to 2020 stratified by Age. APC, annual percent change; CI, confidence intervals. *The APC is significantly different from zero at $\alpha = 0.05$



Supplemental Figure S2. DIC-related AAMRs per 100,000 adults in the United States from 1999 to 2020 stratified by Census region. APC, annual percent change; CI, confidence intervals. *The APC is significantly different from zero at $\alpha = 0.05$



Supplemental Figure S3. DIC-related AAMRs per 100,000 adults in the United States from 1999 to 2020 stratified by urban-rural classification. APC, annual percent change; CI, confidence intervals. *The APC is significantly different from zero at $\alpha = 0.05$