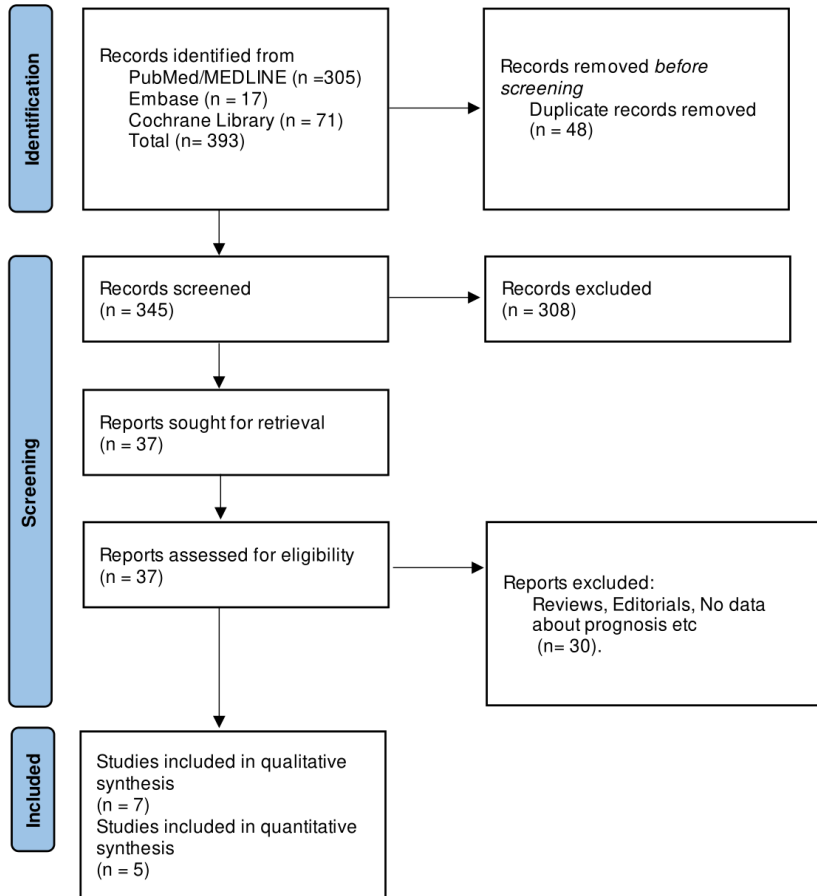


Supplementary Table SI. Detailed search strategy for each database

Database	Search string	Records
PubMed/Medline	(("isolated cardiac sarcoidosis"[All Fields] OR "isolated CS"[All Fields] OR ("primaries"[All Fields] OR "primary"[All Fields]) AND ("cardiacs"[All Fields] OR "heart"[MeSH Terms] OR "heart"[All Fields] OR "cardiac"[All Fields]) AND ("sarcoidosis"[MeSH Terms] OR "sarcoidosis"[All Fields] OR "sarcoidoses"[All Fields]))) AND "systemic cardiac sarcoidosis"[All Fields]) OR "systemic CS"[All Fields] OR (("neoplasm metastasis"[MeSH Terms] OR ("neoplasm"[All Fields] AND "metastasis"[All Fields]) OR "neoplasm metastasis"[All Fields] OR "secondaries"[All Fields] OR "secondary"[MeSH Subheading] OR "secondary"[All Fields]) AND ("cardiacs"[All Fields] OR "heart"[MeSH Terms] OR "heart"[All Fields] OR "cardiac"[All Fields]) AND ("sarcoidosis"[MeSH Terms] OR "sarcoidosis"[All Fields] OR "sarcoidoses"[All Fields])) OR ("extra cardiac"[All Fields] AND ("sarcoidosis"[MeSH Terms] OR "sarcoidosis"[All Fields] OR "sarcoidoses"[All Fields]))	305
Embase	('isolated cardiac sarcoidosis'/exp OR 'isolated CS' OR 'primary cardiac sarcoidosis'/exp) AND ('systemic cardiac sarcoidosis'/exp OR 'systemic CS' OR 'secondary cardiac sarcoidosis'/exp OR 'extra-cardiac sarcoidosis'/exp)	17
Cochrane Library	('isolated cardiac sarcoidosis' OR 'isolated cs' OR 'primary cardiac sarcoidosis') AND ('systemic cardiac sarcoidosis' OR 'systemic cs' OR 'secondary cardiac sarcoidosis' OR 'extra-cardiac sarcoidosis')	71

Supplementary Figure S1. PRISMA flowchart depicting the screening and study selection process



Supplementary Figure S2. Bias assessment summary for the included studies

		Risk of bias domains							
		D1	D2	D3	D4	D5	D6	D7	Overall
Study	Tezuka 2015	-	+	-	+	+	+	+	-
	Sato 2022	+	+	+	+	+	+	+	+
	Okada 2022	-	+	+	+	+	+	+	-
	Sink 2023	-	+	+	+	+	+	+	-
	Kaneko 2023	-	+	+	+	+	+	+	-
	Maeda 2023	+	+	+	+	+	+	+	+
	Takaya 2024	+	+	+	+	+	+	+	+

Domains:

D1: Bias due to confounding.

D2: Bias due to selection of participants.

D3: Bias in classification of interventions.

D4: Bias due to deviations from intended interventions.

D5: Bias due to missing data.

D6: Bias in measurement of outcomes.

D7: Bias in selection of the reported result.

Judgement

- Moderate

+ Low

Supplementary Figure S3. Bias assessment graph for the included studies

