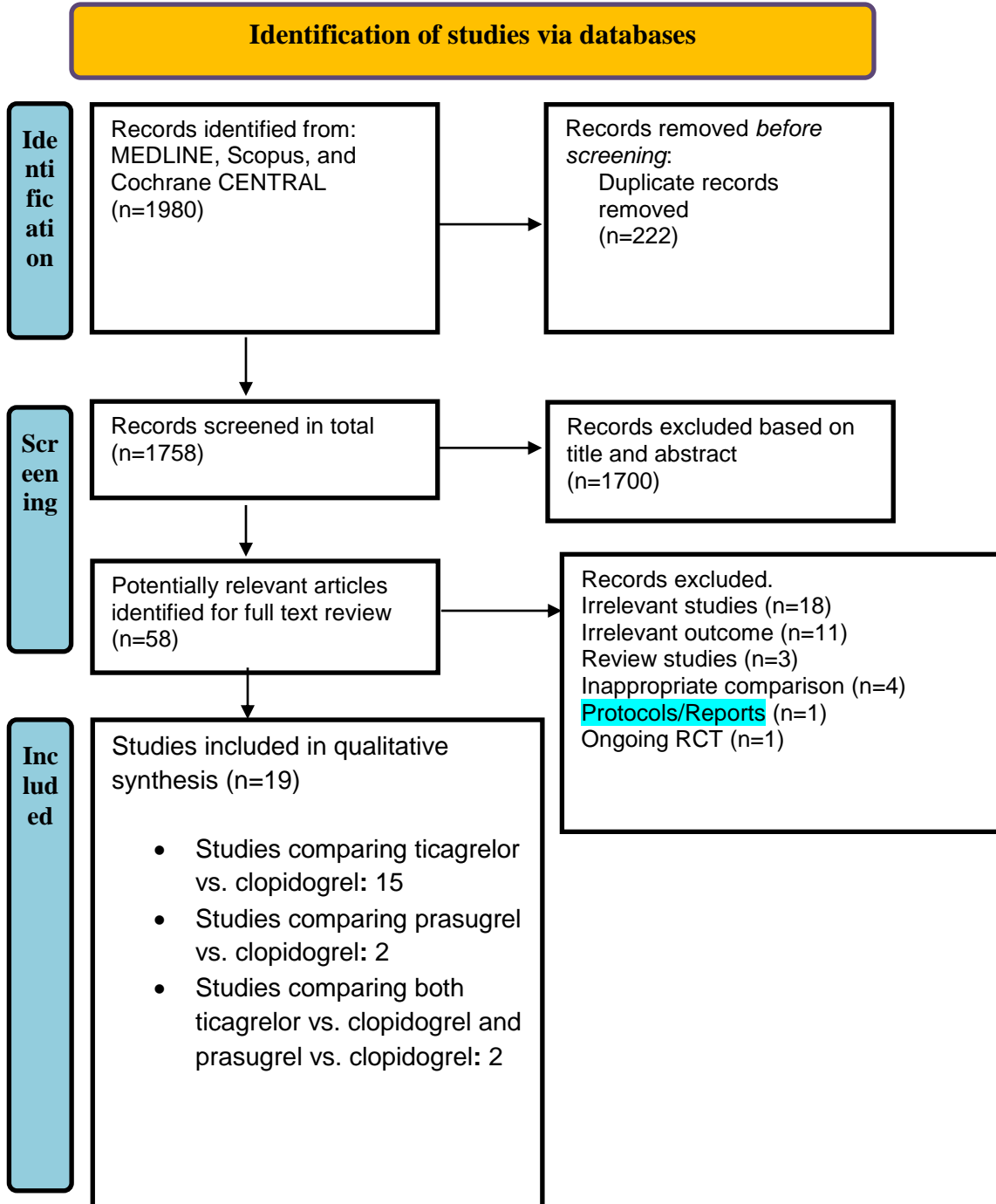


**Supplementary Table SI.** Detailed search strategy used in each database

Database	String
PubMed	(("ticagrelor"[MeSH Terms] OR "ticagrelor"[All Fields] OR "azd6140"[All Fields]) OR ("prasugrel"[MeSH Terms] OR "prasugrel"[All Fields])) AND ("clopidogrel"[MeSH Terms] OR "clopidogrel"[All Fields] OR "sr 25990c"[All Fields]) AND ("coronary artery bypass"[MeSH Terms] OR ("coronary"[All Fields] AND "artery"[All Fields] AND "bypass"[All Fields]) OR "coronary artery bypass"[All Fields] OR "CABG"[All Fields])
Scopus	((Ticagrelor OR Prasugrel) AND Clopidogrel) AND (coronary artery bypass OR CABG OR "coronary artery bypass graft surgery")
Cochrane CENTRAL	((Ticagrelor OR Prasugrel) AND Clopidogrel) AND (coronary artery bypass OR CABG OR "coronary artery bypass graft surgery")

Supplementary Figure S1. PRISMA flow diagram



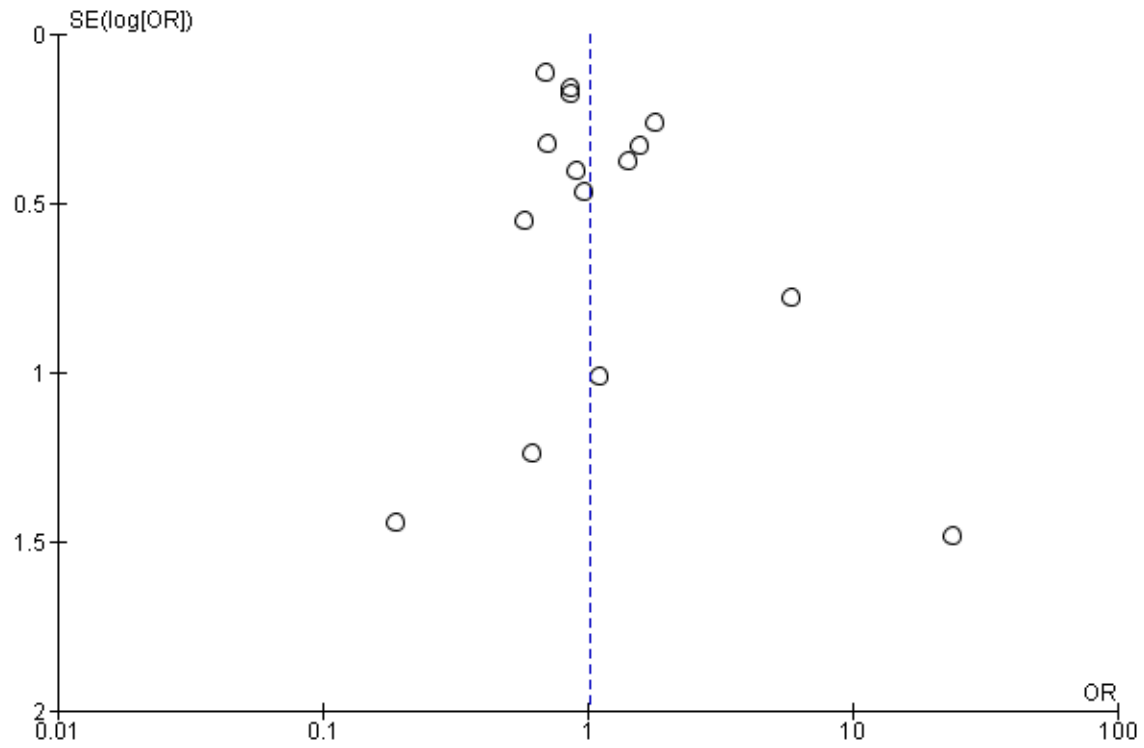
**Supplementary Table SII.** Quality assessment of included cohort studies using the Newcastle-Ottawa Scale (NOS)

Domain		Selection			Comparability		Outcomes		Verdict	
Study	Representativeness of the exposed cohort	Selection of the non-exposed cohort	Ascertainment of exposure	Demonstration that outcome of interest was not present at the start of the study	Comparability of cohorts based on the design or analysis	Assessment of outcome	Was follow-up long enough for outcomes to occur	Adequacy of follow-up of cohorts	Total score	Good/Fair/Poor
Chang 2019	*	*	*		**	*	*	*	8	Good
Della 2017	*	*	*		*	*	*	*	7	Good
Dery 2014	*	*	*			*	*	*	6	Fair
Drews 2014	*	*	*		*	*	*	*	6	Good
Hansson 2015	*	*	*		*	*	*	*	7	Good
Holm 2019	*	*	*		**	*	*	*	8	Good
Ingrassia 2023	*	*	*		**	*	*	*	8	Good
PLATO 2009	*	*	*		*	*	*	*	7	Good
Russo 2019	*	*	*		**	*	*	*	7	Good
Schaefer 2016	*	*	*	*	*	*	*	*	8	Good
Tomšič 2016	*	*	*		*	*	*	*	7	Good
Varma ?	*	*	*	*	*	*	*	*	8	Good
Voetsch 2021	*	*	*		*	*	*	*	7	Good
Vuilliomenet 2019	*	*	*	*	*	*	*	*	8	Good
Wang 2022a	*	*	*		**	*	*	*	8	Good
Wang 2022b	*	*	*		**	*	*	*	8	Good
Yan 2020	*	*	*		*		*	*	6	Good

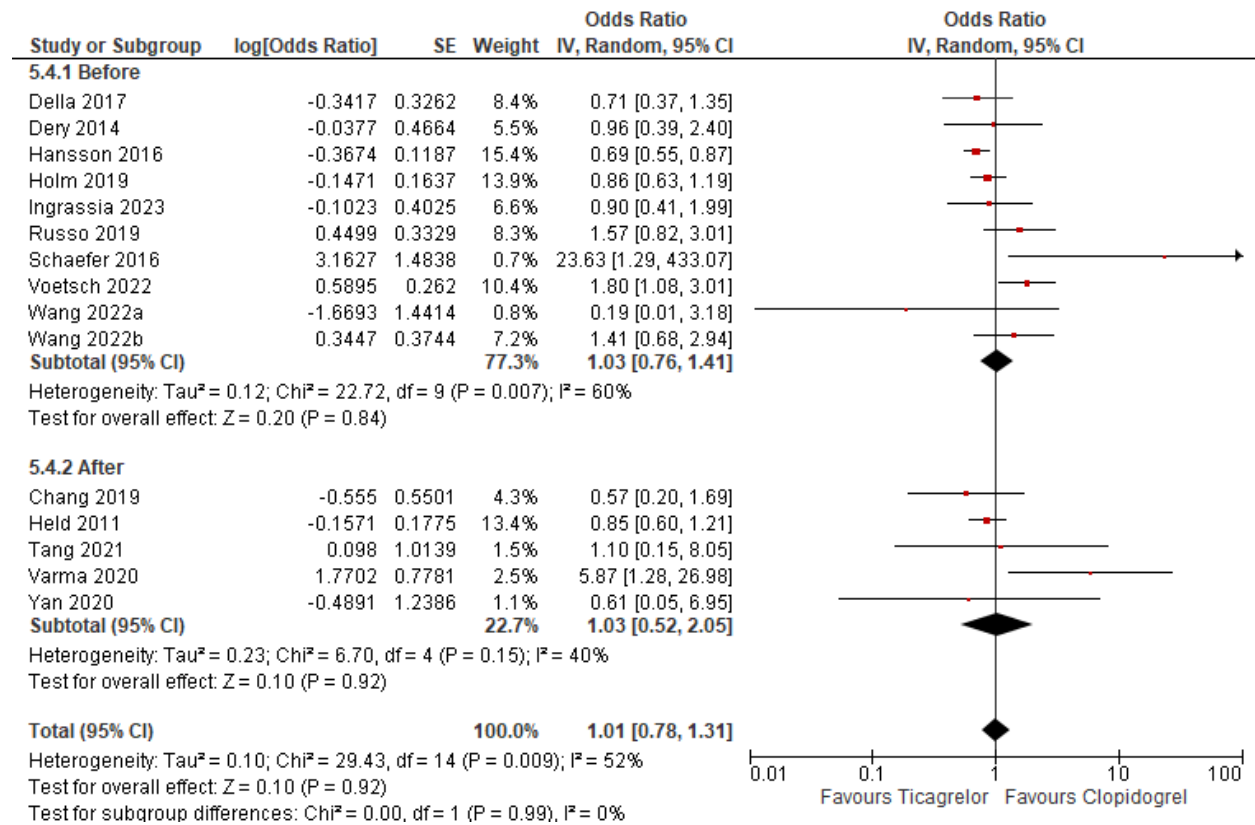
**Supplementary Table SIII.** Assessment of the risk of bias of randomized controlled trials using version 2 of the Cochrane Risk-of-Bias tool.

<b>Trial</b>	<b>Sequence generation</b>	<b>Allocation concealment</b>	<b>Blinding</b>	<b>Detection bias</b>	<b>Attrition bias</b>	<b>Other bias</b>
Tang 2021	Moderate	Moderate	High	Moderate	Low	Low
Held 2011	Low	Low	Low	Low	Low	Moderate
Smith 2012	Low	Low	Low	Low	Low	Moderate

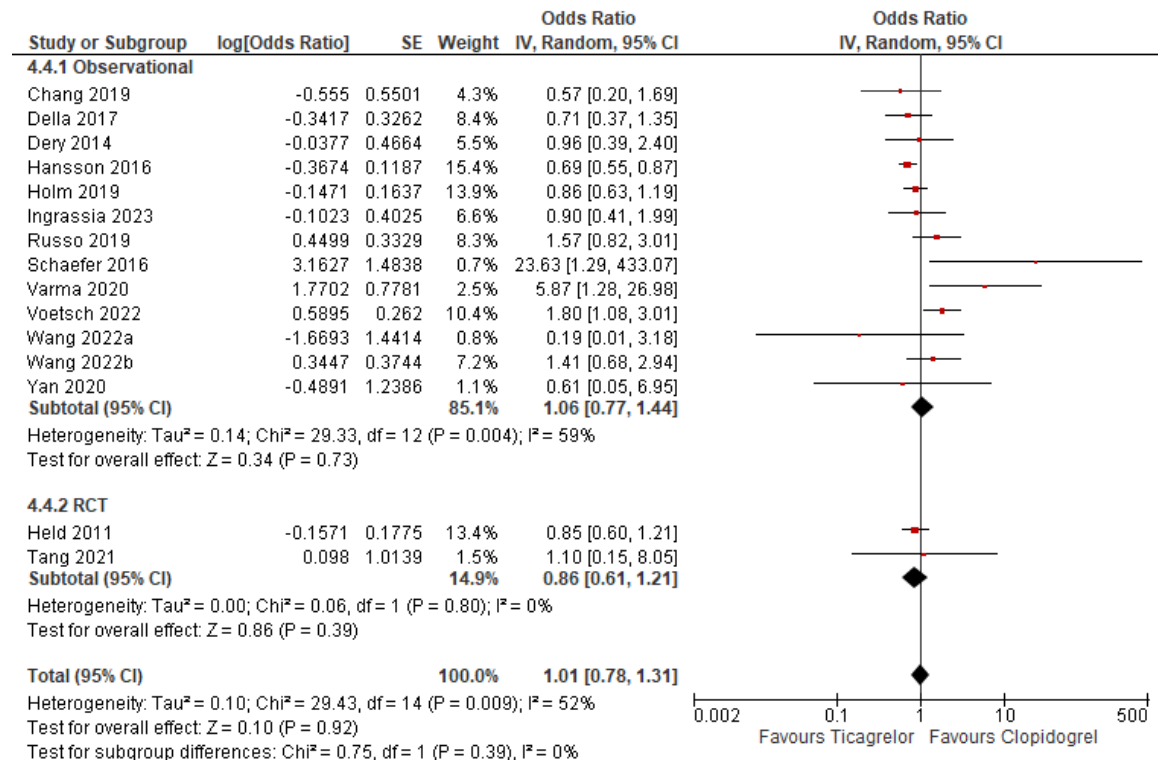
**Supplementary Figure S2.** Funnel plot assessing publication bias for the effect of ticagrelor compared with clopidogrel on major bleeding



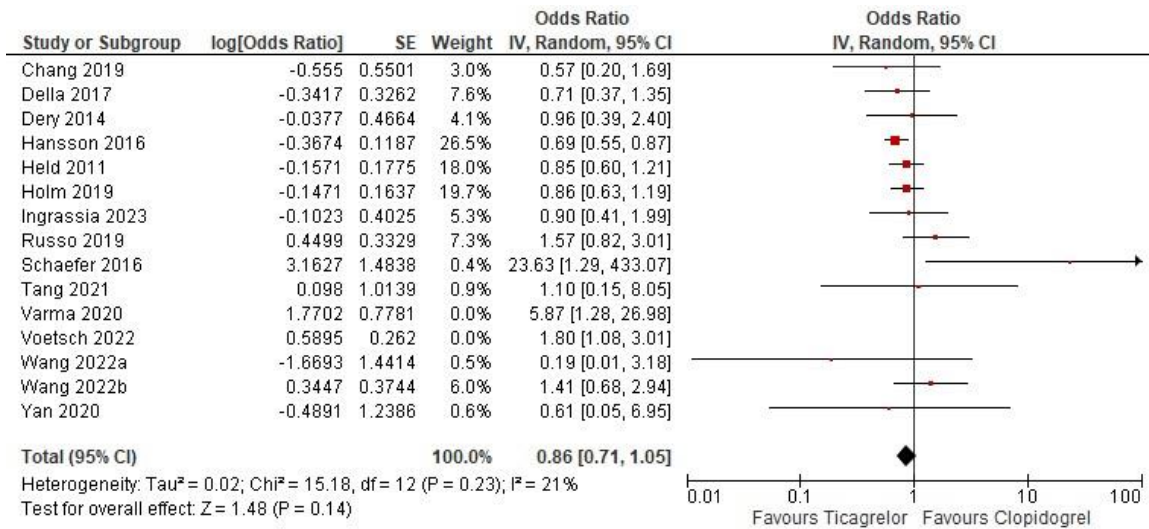
**Supplementary Figure S3.** The effect of ticagrelor compared with clopidogrel on major bleeding stratified by incidence of drug administered



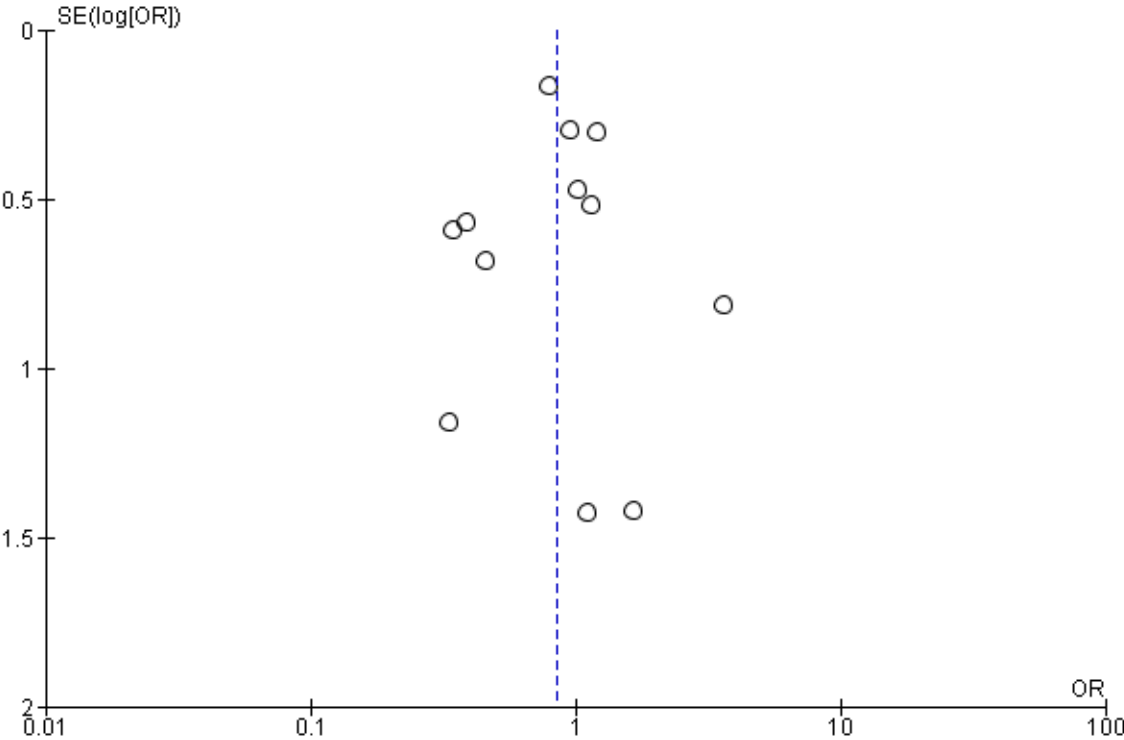
**Supplementary Figure S4.** The effect of ticagrelor compared with clopidogrel on major bleeding stratified by study design



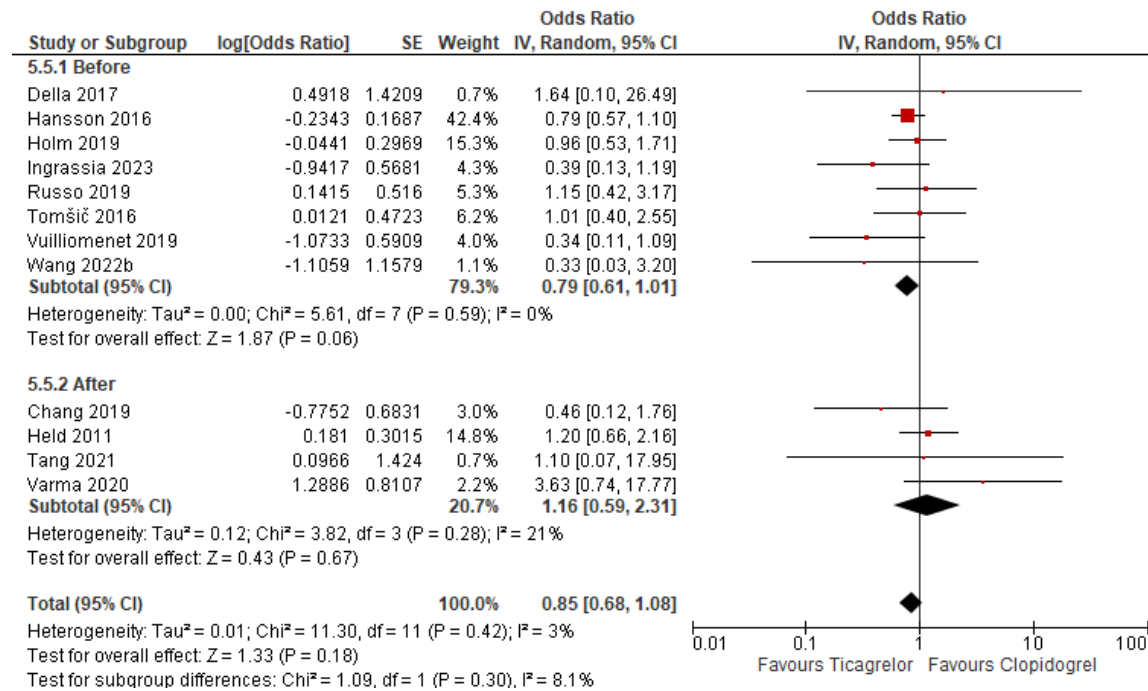
**Supplementary Figure S5.** The effect of ticagrelor compared with clopidogrel on major bleeding with Varma and Voetsch removed



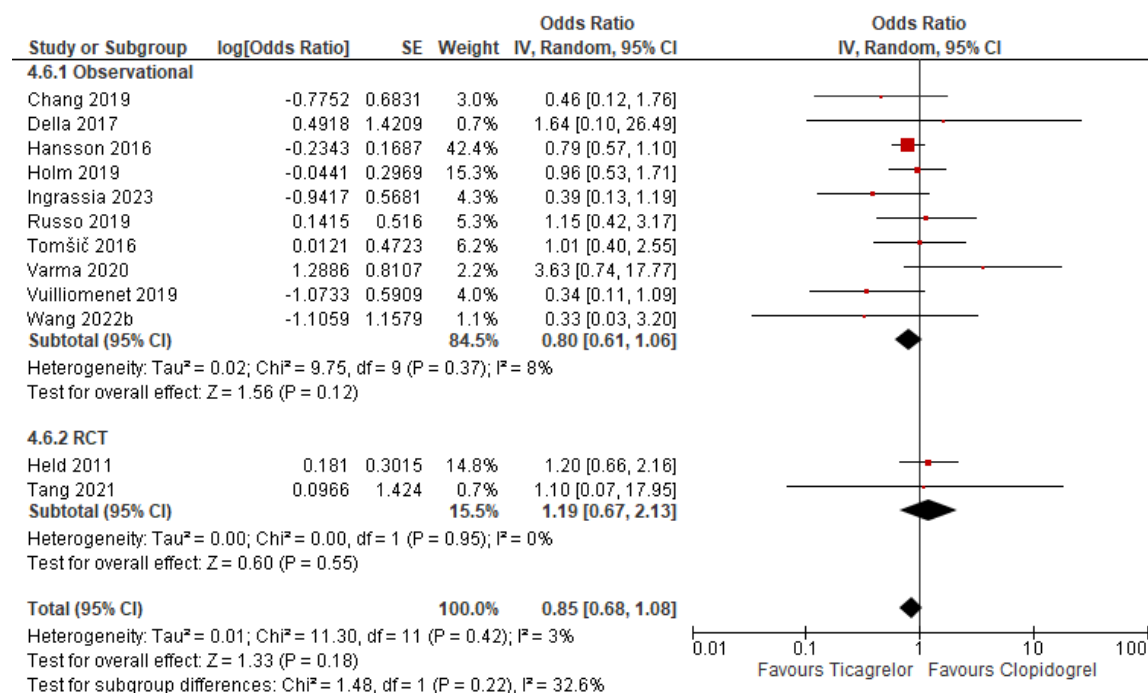
**Supplementary Figure S6.** Funnel plot assessing publication bias for the effect of ticagrelor compared with clopidogrel on re-bleeding



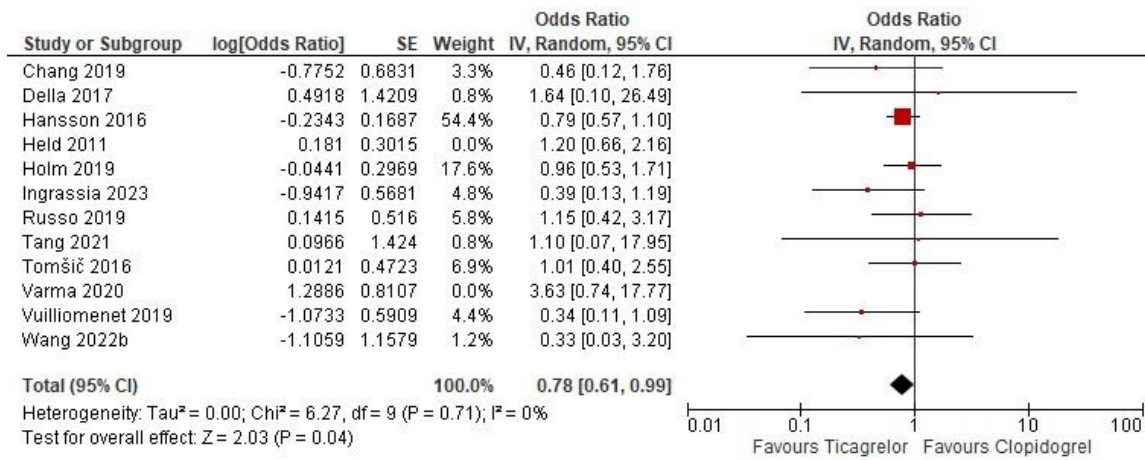
**Supplementary Figure S7.** The effect of ticagrelor compared with clopidogrel on re-bleeding stratified by incidence of drug administered



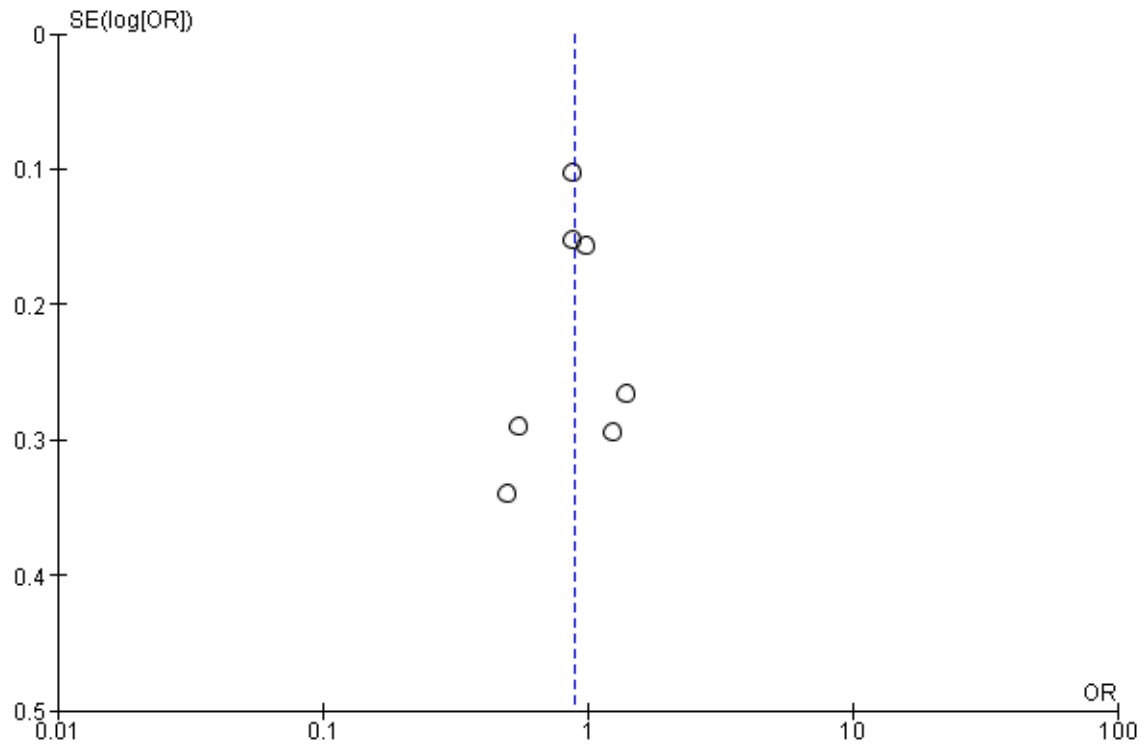
**Supplementary Figure S8.** The Effect of ticagrelor compared with clopidogrel on re-bleeding stratified by study design



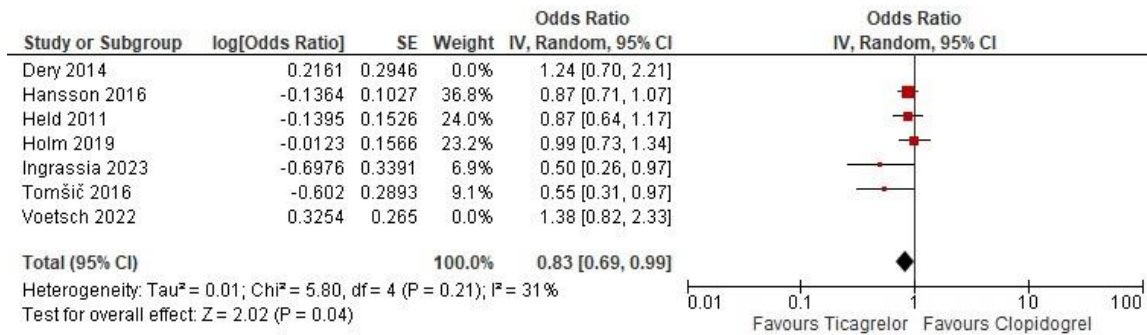
**Supplementary Figure S9.** The effect of ticagrelor compared with clopidogrel on re-bleeding with Held and Varma removed



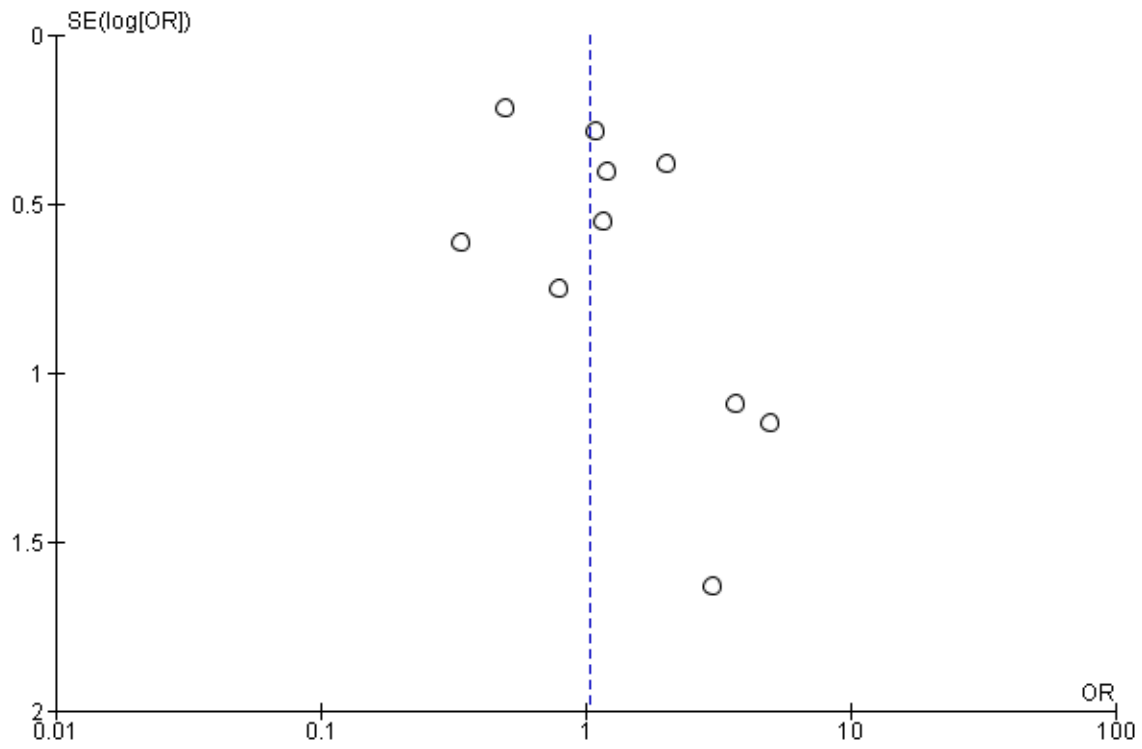
**Supplementary Figure S10.** Funnel plot assessing publication bias for the effect of ticagrelor compared with clopidogrel on platelet transfusion



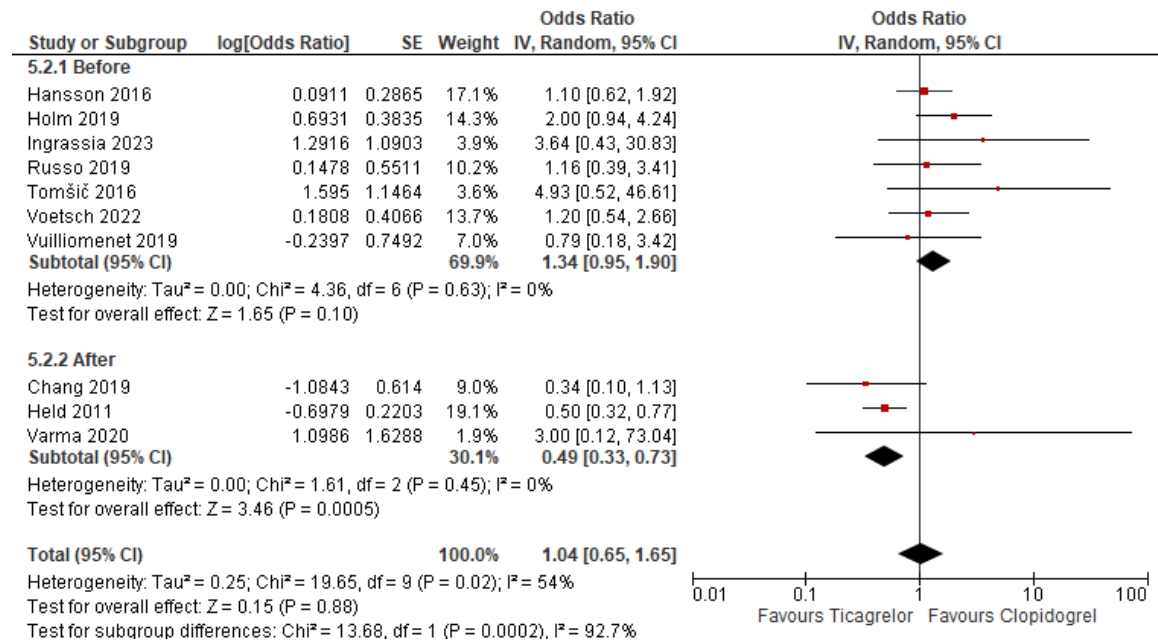
**Supplementary Figure S11.** The effect of ticagrelor compared with clopidogrel on platelet transfusion with Voetsch and Dery removed



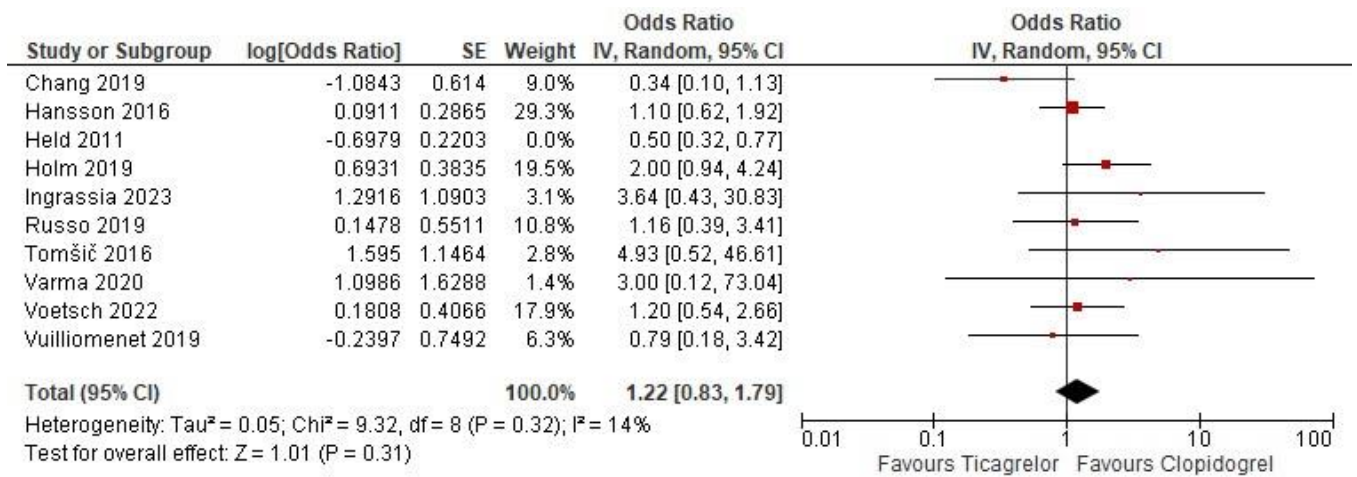
**Supplementary Figure S12.** Funnel plot assessing publication bias for the effect of ticagrelor compared with clopidogrel on all-cause mortality



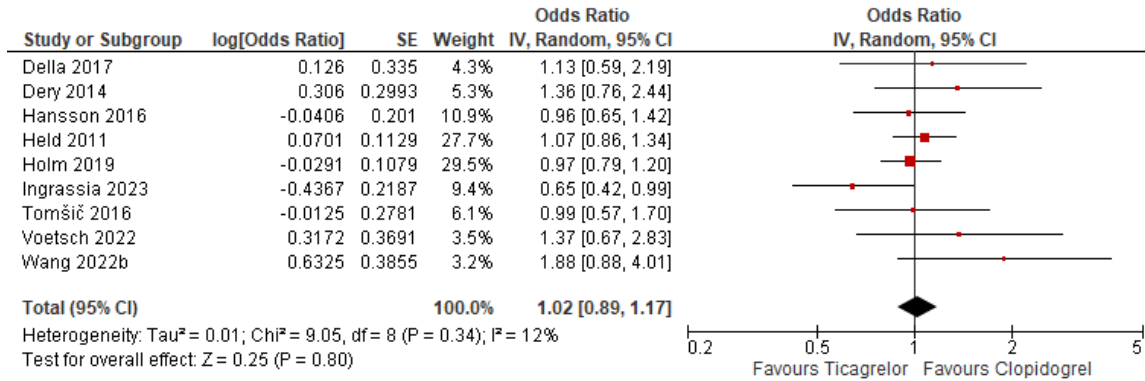
**Supplementary Figure S13.** The effect of ticagrelor compared with clopidogrel on all-cause mortality stratified by incidence of drug administered



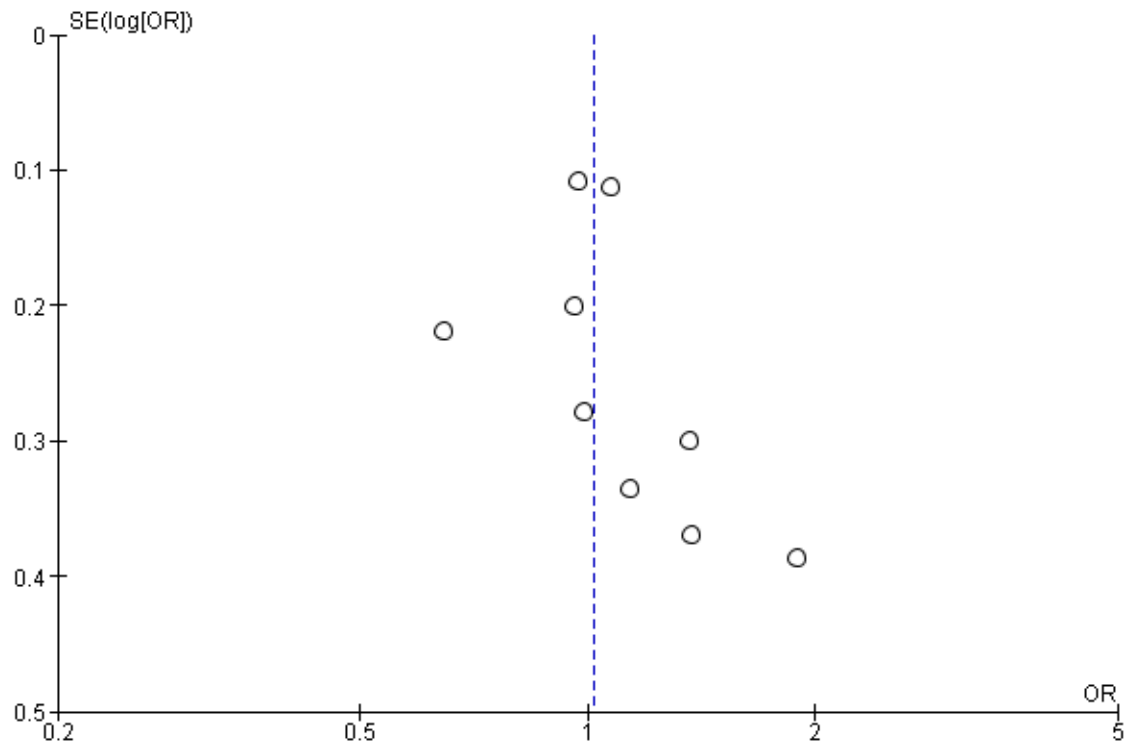
**Supplementary Figure S14.** The effect of ticagrelor compared with clopidogrel on all-cause mortality with Held removed



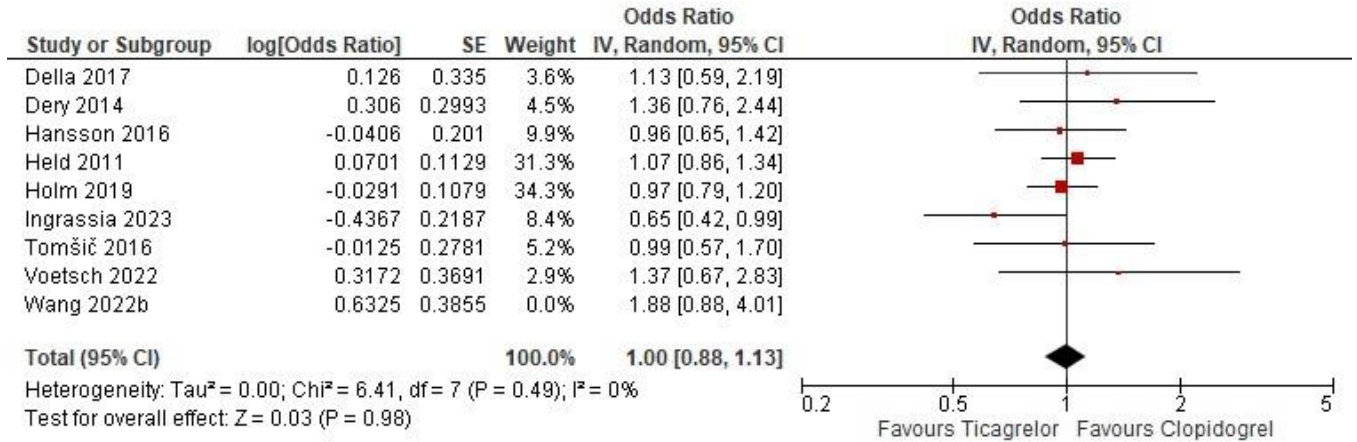
**Supplementary Figure S15.** The effect of ticagrelor compared with clopidogrel on red blood cells/RBC transfusion



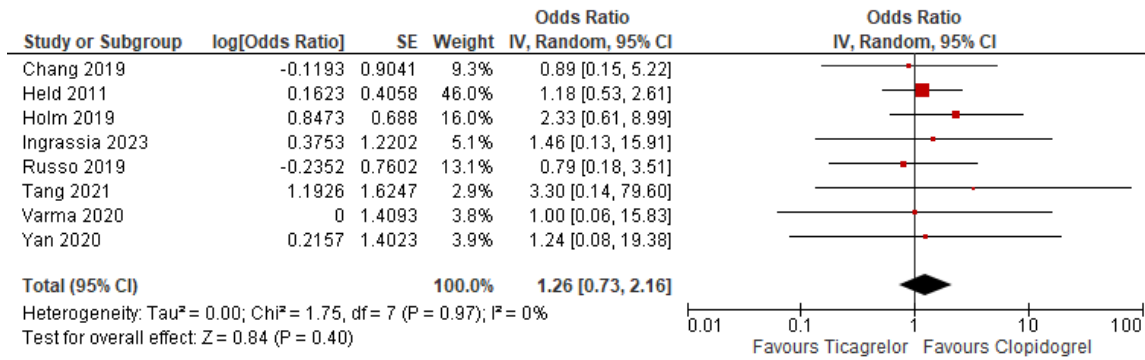
**Supplementary Figure S16.** Funnel plot assessing publication bias for the effect of ticagrelor compared with clopidogrel on red blood cells/RBC transfusion



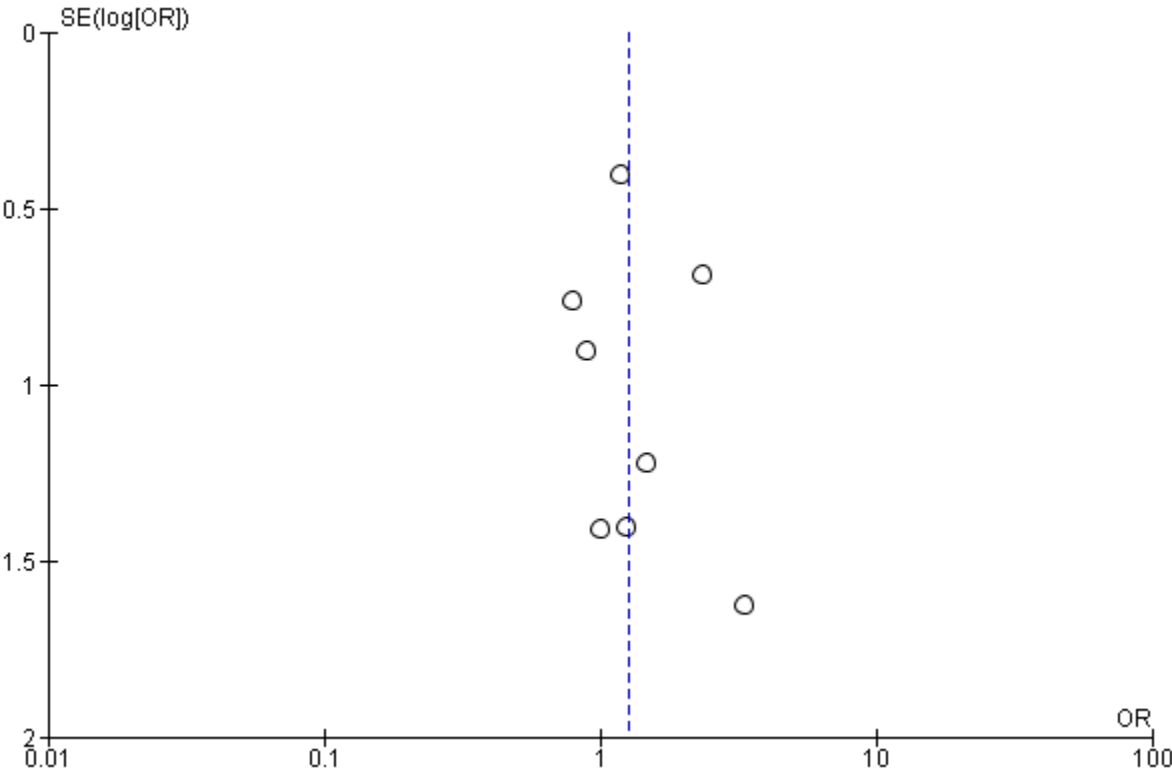
**Supplementary Figure S17.** The effect of ticagrelor compared with clopidogrel on red blood cells/RBC transfusion with Wang removed



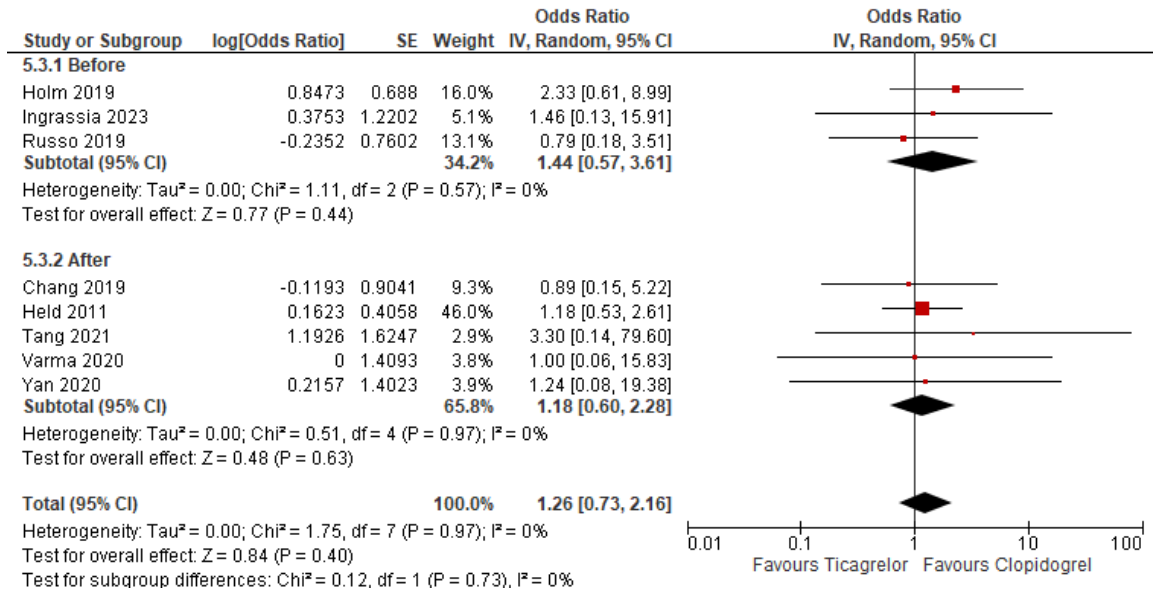
**Supplementary Figure S18.** The effect of ticagrelor compared with clopidogrel on stroke



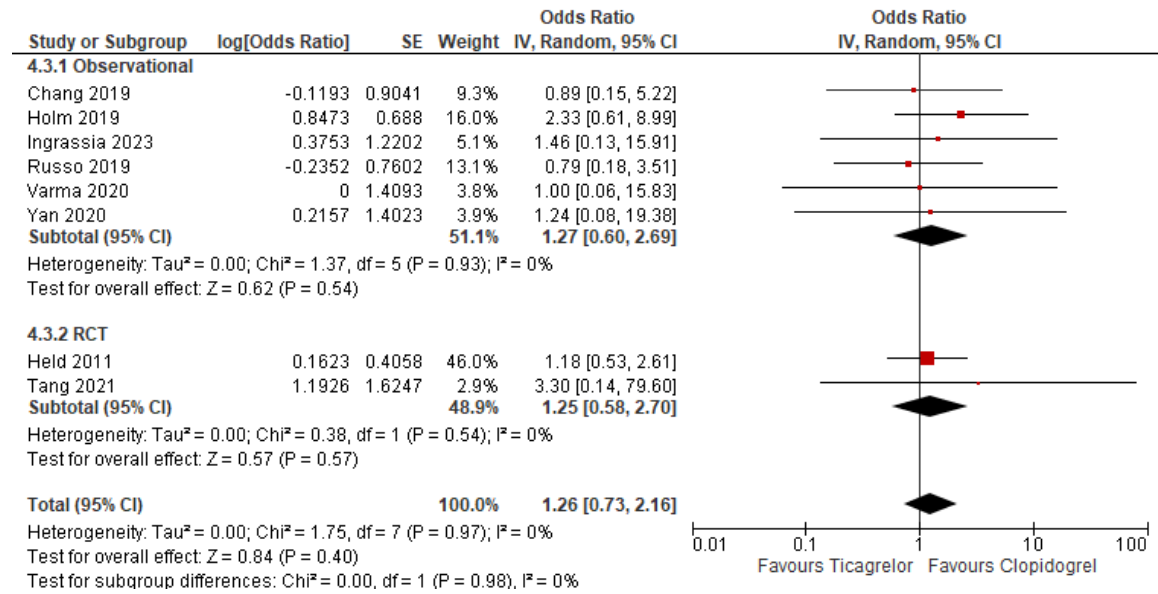
**Supplementary Figure S19.** Funnel plot assessing publication bias for the effect of ticagrelor compared with clopidogrel on stroke



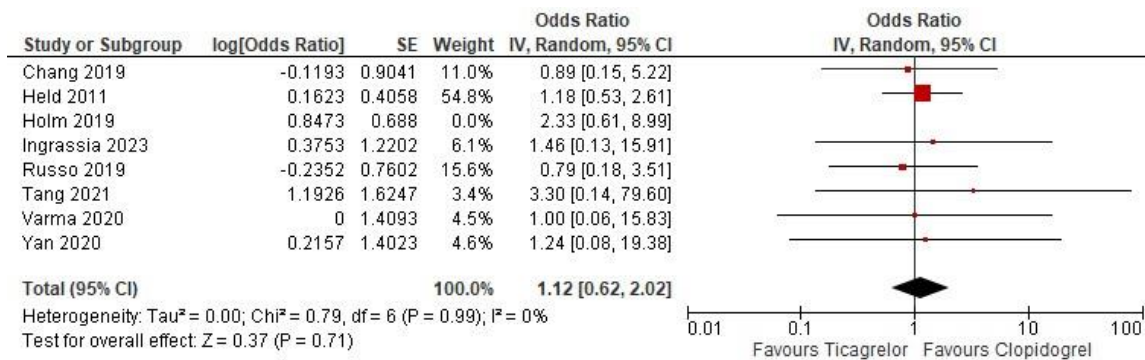
**Supplementary Figure S20.** The effect of ticagrelor compared with clopidogrel on stroke stratified by incidence of drug administered



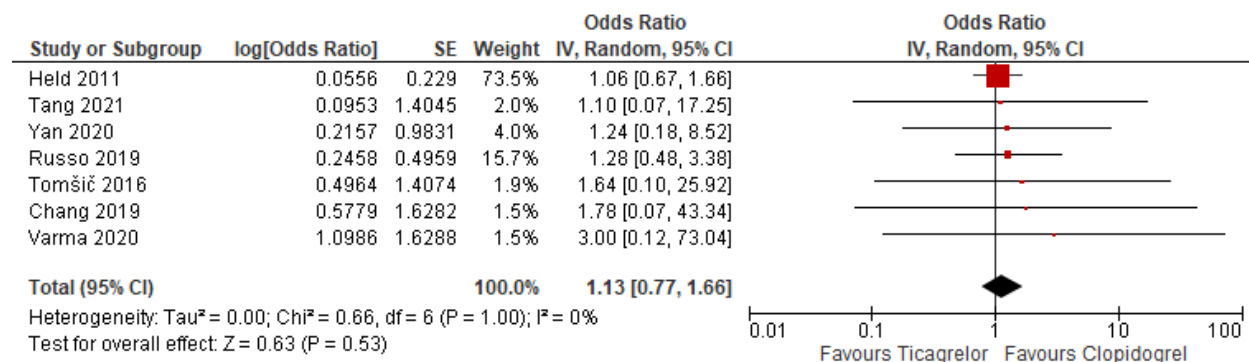
**Supplementary Figure S21.** The Effect of ticagrelor compared with clopidogrel on stroke stratified by study design



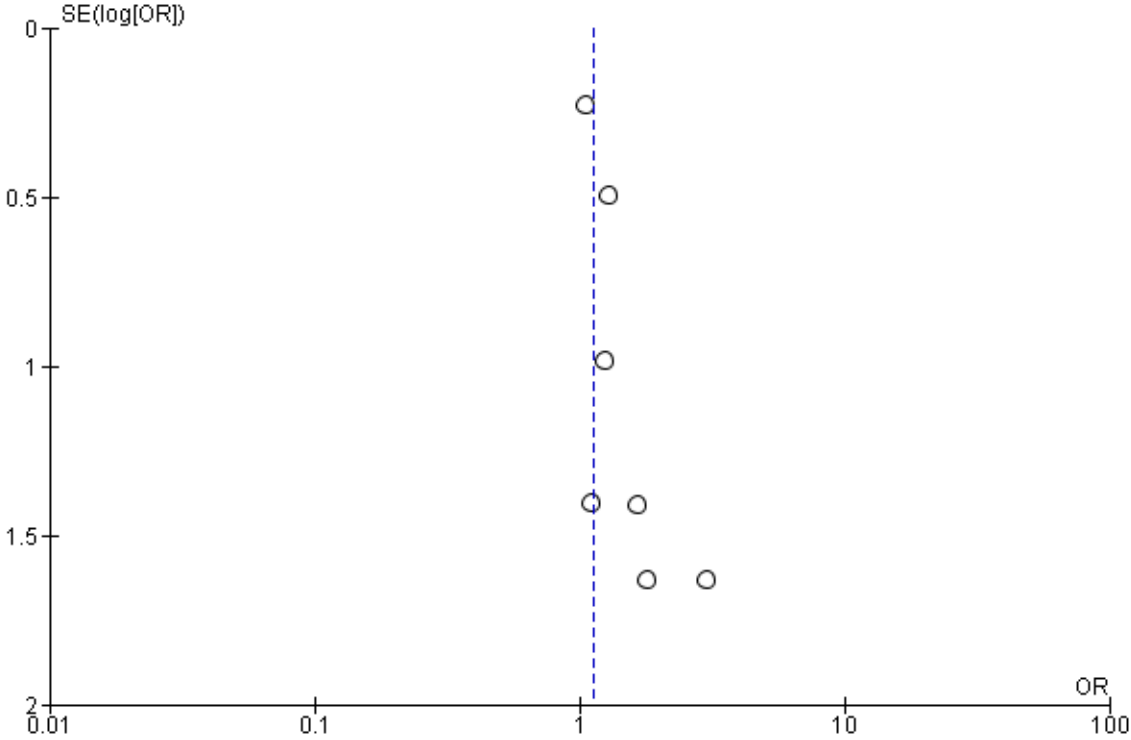
**Supplementary Figure S22.** The effect of ticagrelor compared with clopidogrel on stroke with Holm removed



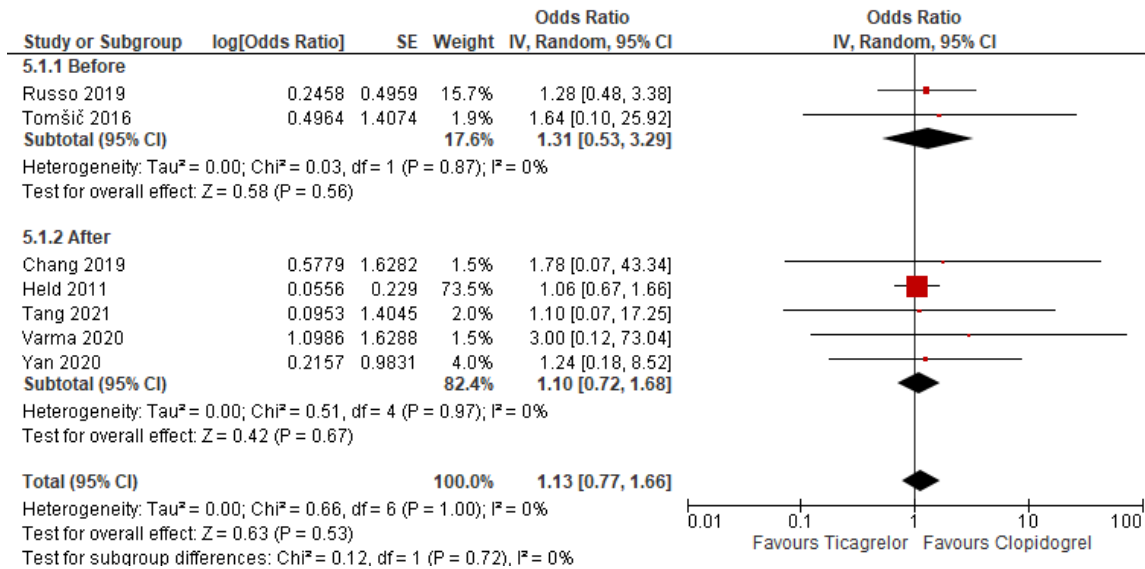
**Supplementary Figure S23.** The effect of ticagrelor compared with clopidogrel on myocardial infarction



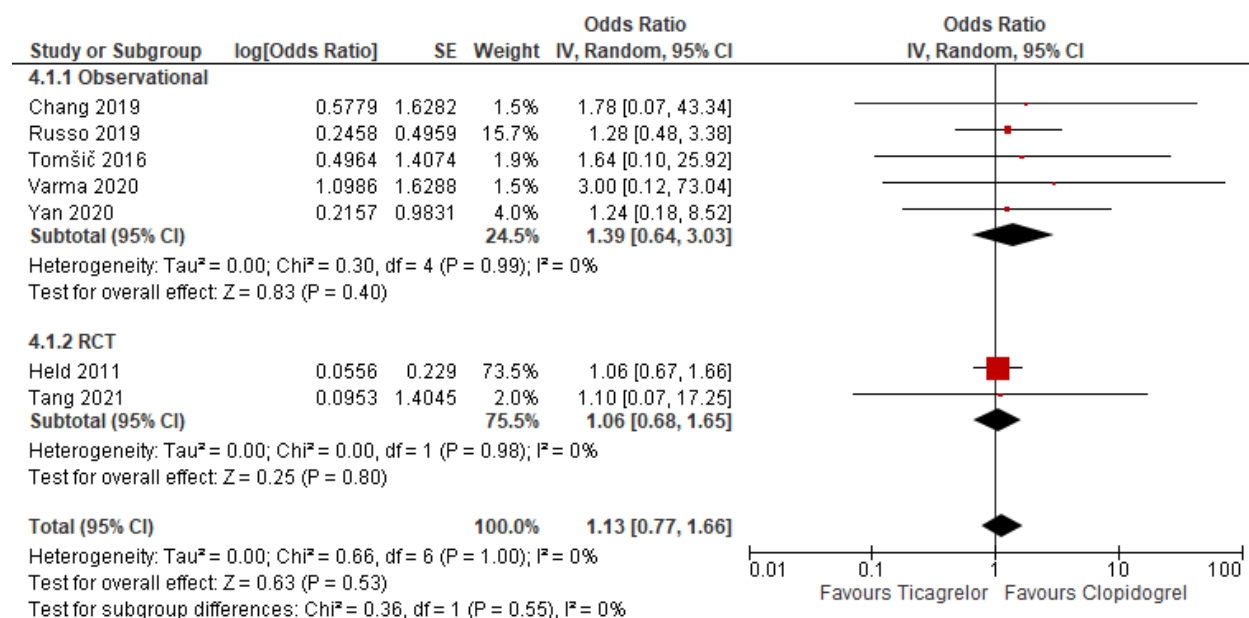
**Supplementary Figure S24.** Funnel plot assessing publication bias for the effect of ticagrelor compared with clopidogrel on myocardial infarction



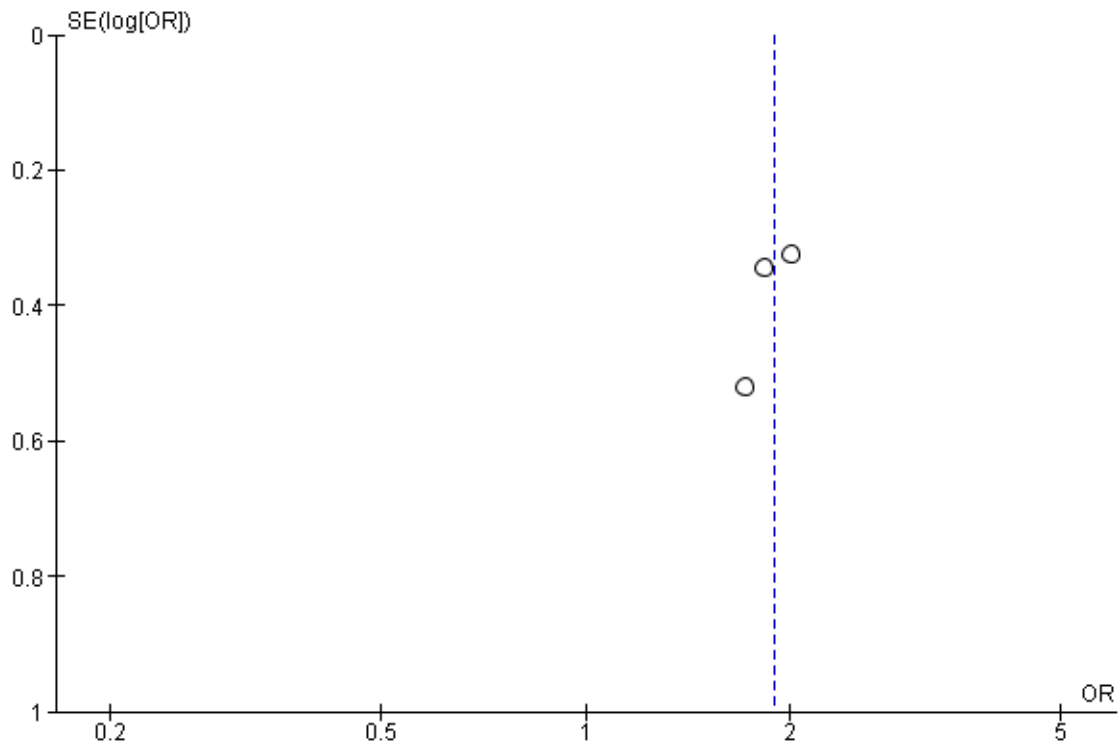
**Supplementary Figure S25.** The effect of ticagrelor compared with clopidogrel on myocardial infarction stratified by incidence of drug administered



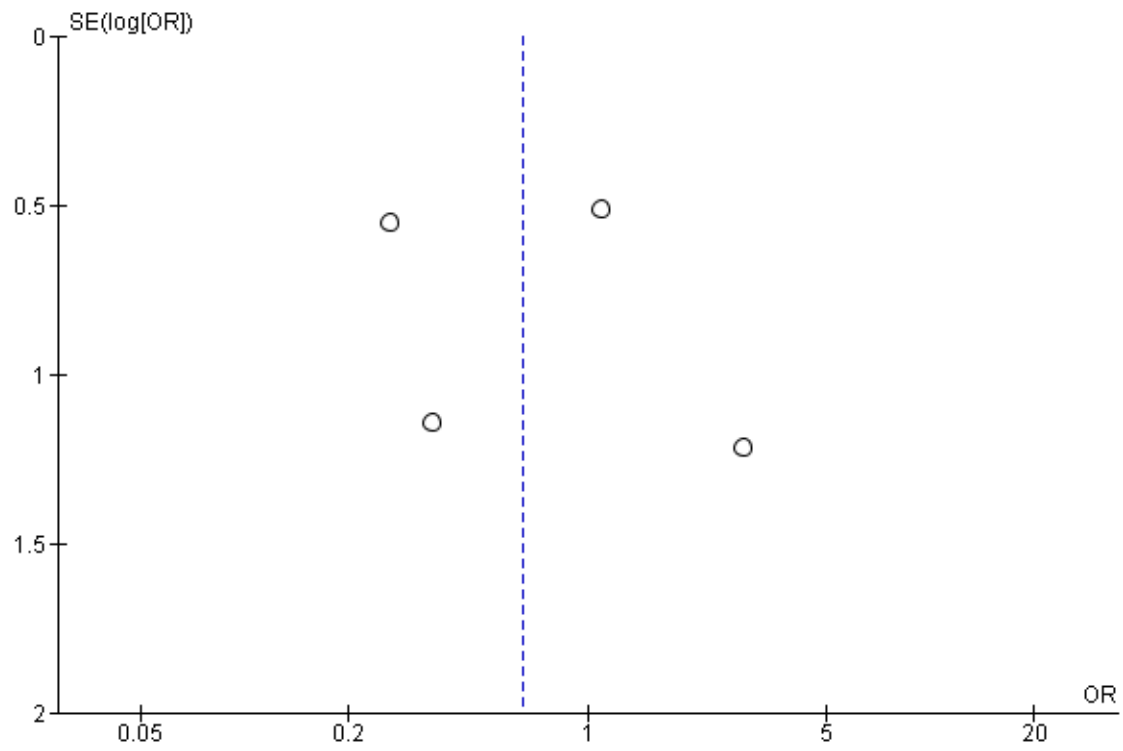
**Supplementary Figure S26.** The effect of ticagrelor compared with clopidogrel on myocardial infarction stratified by study design



**Supplementary Figure S27.** Funnel plot assessing publication bias for the effect of prasugrel compared with clopidogrel on platelet transfusion



**Supplementary Figure S28.** Funnel plot assessing publication bias for the effect of prasugrel compared with clopidogrel on all-cause mortality



**Supplementary Figure S29.** The effect of prasugrel compared with clopidogrel on all-cause mortality with Smith removed

